



Power plug 14/17

Mounting Instructions

2007-12-17

38-133905d

Description

The contact consists of two parts:

The vehicle section - contact box

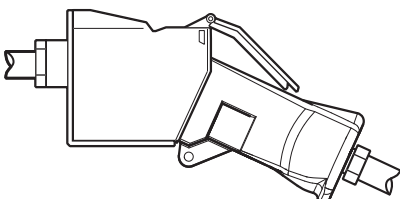
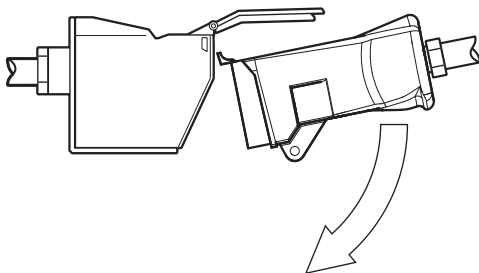
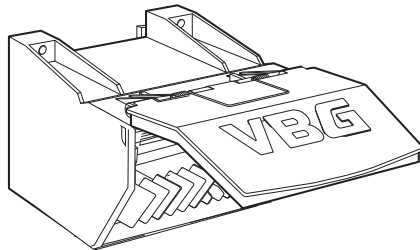
Trailer section - socket

The socket and contact box have conduit entries dimensioned for cables $\text{Ø}10.5 \text{ mm}$ - $\text{Ø}17.5 \text{ mm}$. The VBG Kontakt 14 and 17 are designed such that the socket automatically disconnects if you happen to forget about it when uncoupling the trailer.

Identify all parts before assembly. All assembly and service work must be performed carefully and in a professional manner.

Follow the instructions. Always observe the vehicle manufacturer's instructions for electrical installation on the vehicle.

Leave all instructions and directions in the vehicle for the customer for reference in future service and maintenance.



General

- Cable dimension shall always be chosen taking power consumption into consideration. When dimensioning, keep in mind any extra equipment that may be fitted at a later date.

- *Do not connect a 14-terminal socket to a 17-terminal contact box or vice versa. Risk for short circuits.*

- In the 17-terminal socket, the space at terminal 8 is blocked to avoid confusion.

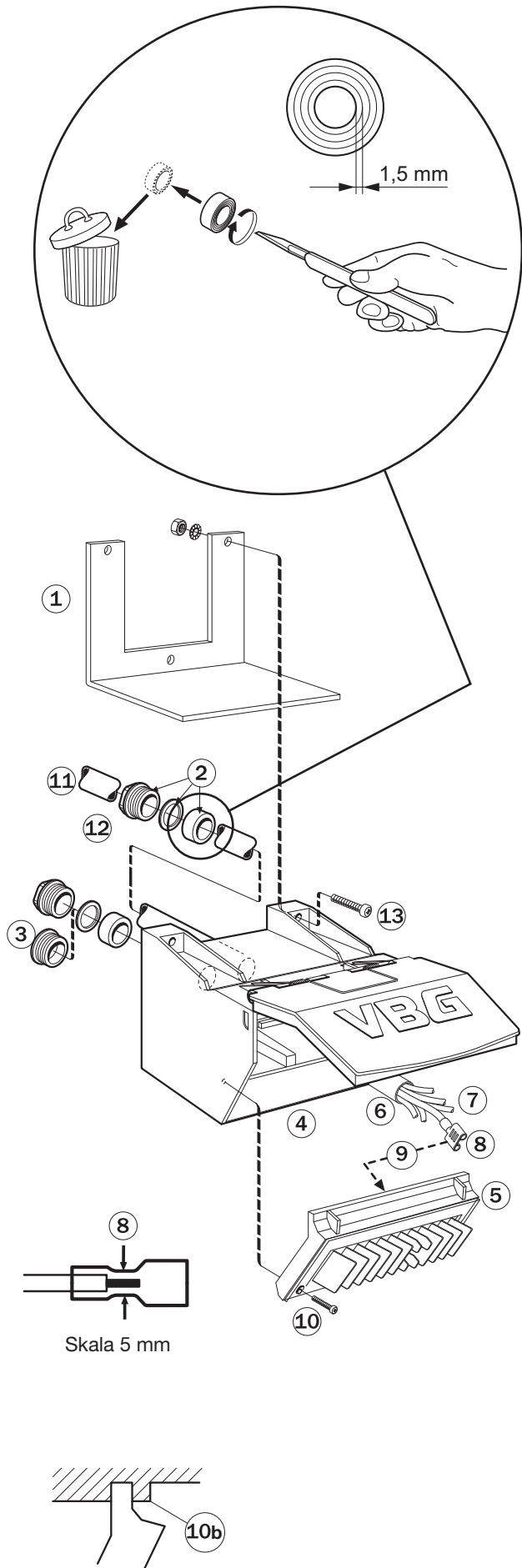
14-terminal Black insert

17-terminal Red insert

- Weekly maintenance of the contact surfaces involves cleaning and corrosion resistance using VBG Electro Oil.

- To be absolutely assured that the connection between the contact box and the socket is correct, an optional lock hook is available, part number 28-027600.

- In particularly severe operating conditions, the contact box should be equipped with a heating coil, part number 28-029900.



Fitting the contact box

1. Fit an appropriate bracket on the vehicle. Locate the control box horizontally and so that nothing prevents the socket from disconnecting automatically.
2. Slip the conduit entries onto the cable - sealed nut - washer - gasket.
3. If both conduit entries are not to be used, fit a plug with washer and gasket.
4. Lock the cover in the open position.
5. Remove the insert and pull each cable through its respective entry point. Pull it out as much as necessary to work comfortably with the connections.
6. Strip the cable casing back about 60 mm.
7. Check and label the wires by function.
8. Strip the wires about 5 mm. Fit cable shoes with the recommended dimensions.
9. Connect the cables to the flat connector blades in the insert as per the wiring plan. Spray with VBG Electro Oil onto the cable shoes and connector blades to prevent corrosion.
10. Place the insert in the box and affix it using two screws.

N.B. The upper edge of the insert shall be located inside the support heel in the upper edge of the box (10b). Close the cover.

11. Adjust the cable at each conduit entry point without exerting pressure on the cable.
12. Insert and tighten the conduit entry with moderate force so that it seals.
13. Tighten the contact box in the brackets with three screws, lock washers and nuts. The contact box shall be seated horizontally and with the label upwards. This is important so that the socket can disconnect automatically.

• Fit the electrical heating coil (where applicable) between the parking light and earth in the contact box.

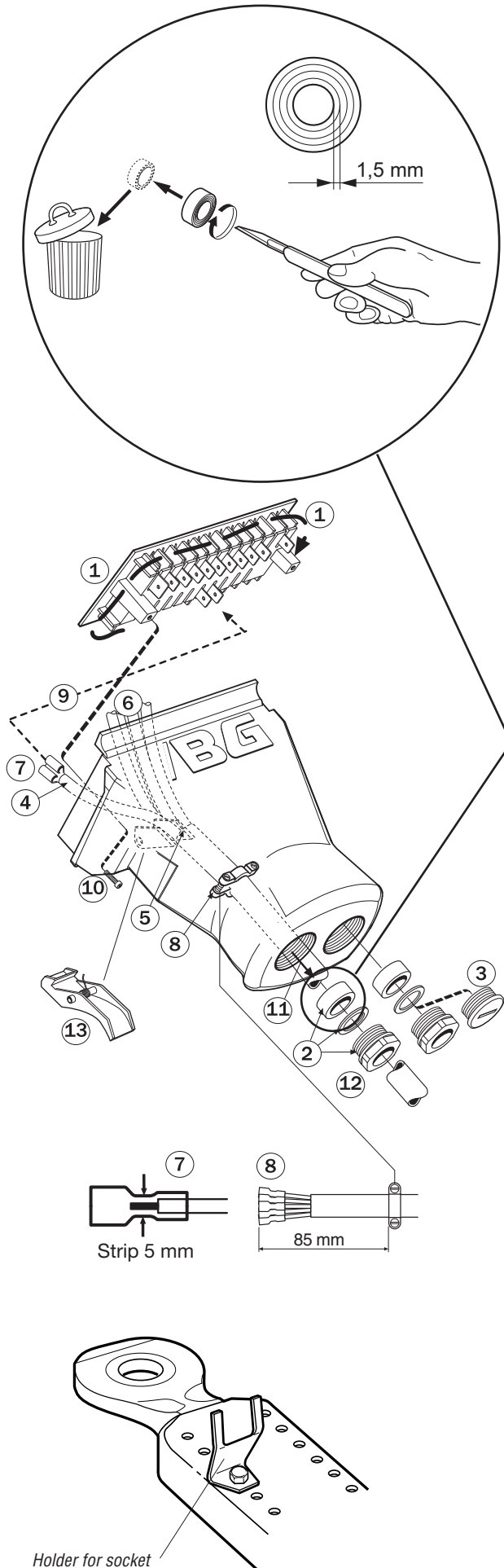
Wiring plan

Ter. 14-terminal (black)

17-terminal (red)

1	Earth	Earth
2	Left Flashers	Left Flashers
3	Right Flashers	Right Flashers
4	Brake Lights	Brake Lights
5	Left Tail Lights	Left Tail Lights
6	Right Tail Lights	R Tail Lights B Aux
7	A Tail Light B Tail Fog Light	A Tail Light B Tail Fog Light
8	A Aux B Aux	A Aux
9	Aux	A Aux B Aux
10	Aux	A Aux B Aux
11	Aux	A Aux B Aux
12	Charging Current	Charging Current

• Terminals 1 and 12 require larger cable shoes (9.5 mm). The cable dimension shall always be chosen taking power consumption into consideration. When dimensioning, keep in mind any extra equipment that may be fitted at a later date.



Fitting the socket

1. Remove the insert. To prevent the terminals from falling out, wind a bit of electrical tape around it.
 2. Slip the conduit entries onto the cable - sealed nut - washer - gasket.
 3. If both conduit entries are not to be used, fit a plug with washer and gasket.
 4. Pull each cable through its respective entry point. Pull it out as much as necessary to work comfortably with the connections.
 5. Strip the cable casing back about 60 mm.
 6. Check and label the wires by function.
 7. Strip the wires about 5 mm. Fit cable shoes with the recommended dimensions.
 8. Set the hose clamp 85 mm from the cable shoes and tighten the screws until it is fixed on the cable.
 9. Connect the wires to the blade connectors in the cartridge as per the wiring plan. Spray with VBG Electro Oil onto the cable shoes and connector blades to prevent corrosion.
 10. Place the insert in the box and affix it using two screws.
 11. Check by pulling the cable that the hose clamp is properly mounted.
 12. Insert and tighten the conduit entry with moderate force so that it seals.
 13. Where applicable, install the lock hook on the lower edge.
- A holder for the socket when the trailer is uncoupled can be fitted on the drawbar, part no. 28-030100.

Wiring plan

Ter. 14-terminal (black)	17-terminal (red)
1 Earth	Earth
2 Left Flashers	Left Flashers
3 Right Flashers	Right Flashers
4 Brake Lights	Brake Lights
5 Left Tail Lights	Left Tail Lights
6 Right Tail Lights	R Tail Lights B Aux
7 A Tail Light B Tail Fog Light	A Tail Light B Tail Fog Light
8 A Aux B Aux	A Aux
9 Aux	A Aux B Aux
10 Aux	A Aux B Aux
11 Aux	A Aux B Aux
12 Charging Current	Charging Current

- Terminals 1 and 12 require larger cable shoes (9.5 mm). The cable dimension shall always be chosen taking power consumption into consideration. When dimensioning, keep in mind any extra equipment that may be fitted at a later date.

VBG PRODUKTER AB reserve the right to amend or alter specifications at their discretion.



VBG GROUP TRUCK EQUIPMENT AB

Herman Kreftings gata 4
Box 1216
SE-462 28 VÄNERSBORG
Tel +46 521 27 77 00
E-mail info@vbg.se
www.vbg.se