

## SPECIFICATIONS

## SUPRA 850 U

The new SUPRA 850 U is an extremely powerful undermount diesel truck unit, combining exceptional cooling capacities with robust reliability.

The ideal solution for vehicles with high cabs or trucks with draw-bar drailers, SUPRA 850 U can also be adapted on to city-trailers.



#### ■ Condensor

**Dimensions:** 1 794 x 645 x 590 mm

**Weight:** 463 kg

#### ■ Refrigeration capacity

##### Road

0 °C: 7 525 W

- 20 °C: 4 685 W

##### Standby

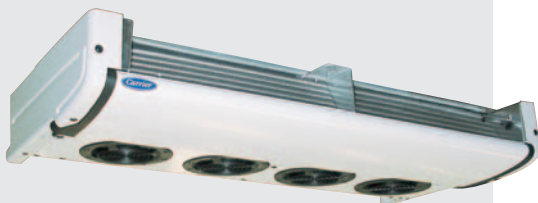
0 °C: 6 570 W

- 20 °C: 4 030 W

Ambient temperature at + 30 °C  
(per A.T.P. procedure)

#### ■ Airflow

2 925 m<sup>3</sup>/h  
(constant at high & low speed)



#### ■ Evaporator

**Dimensions:** 1 450 x 752 x 219 mm

**Weight:** 52 kg

Associating all the advantages of the new SUPRA design, SUPRA 850 U also brings the benefits of quieter unit operation when used for city distribution.

▶ **Highly resistant to humidity, pollution and dust** meaning you can carry out your business in complete confidence

▶ **Exceptional reliability and performance** that ensures you enhanced product protection and low operation costs

▶ **Low-noise operation** so that you can operate at all hours even in noise-sensitive areas

▶ **User-friendly EasyCOLD® microprocessor control** for a unit that is simple to operate

▶ **A new generation extra-flat evaporator** to give you optimised loading capacity.

Automatic diesel restart

Cab command with: Automatic pre-trip unit check function - Back-lit cab command display and keys to set and programme the microprocessor parameters

#### Safety devices

Standby motor overload protection  
Standby motor short cycle protection  
High coolant temperature protection  
Low engine oil protection  
Low and high refrigerant pressure protection  
Receiver tank pressure relief valve

#### Accessories

Supply air sensor to avoid top freezing  
Battery  
Battery box  
Fuel tank 90 or 200 l  
Automatic phase reverser  
Fuel heater  
Single compartment control panel & cable extension  
Airport installation kit option (upon request)  
External watertight box for cab command

#### T model

HFC R404A refrigerant  
719 cc Tri-Vortex diesel engine  
05K4 4-cylinder compressor  
Standby motor  
Remote plug  
Ultra low-noise sound control system  
Automatic hot gas heating and defrost system  
Manual defrost  
Directly accessible oil & coolant gauges  
Two sight glasses to monitor refrigerant level  
Dry air, fuel and remote oil filters  
Poly-V Flexonic® belts  
Pre-installed accessory package (electric fuel pump, fuel lines, battery cables)  
EasyCOLD® Microprocessor control system:  
Automatic Start/Stop  
Visual displays for: cooling - heating - defrost - auto-start - temperature  
Programmable defrost interval  
Battery voltage indicator



Specifications are subject to change without notice.



500 Carrier service stations  
in Europe, Russia,  
Middle East and Africa



**Carrier**

A United Technologies Company

Carrier Transicold Europe S.C.S.  
10, boulevard de l'Oise  
F-95031 Cergy Pontoise Cedex  
Phone: +33 (0)1 34 43 48 00  
Fax: +33 (0)1 34 43 48 48  
[www.carrier-transicold-europe.com](http://www.carrier-transicold-europe.com)